

Commissioner's Spotlight

April 30, 2024



“The Team, The Team, The Team.”



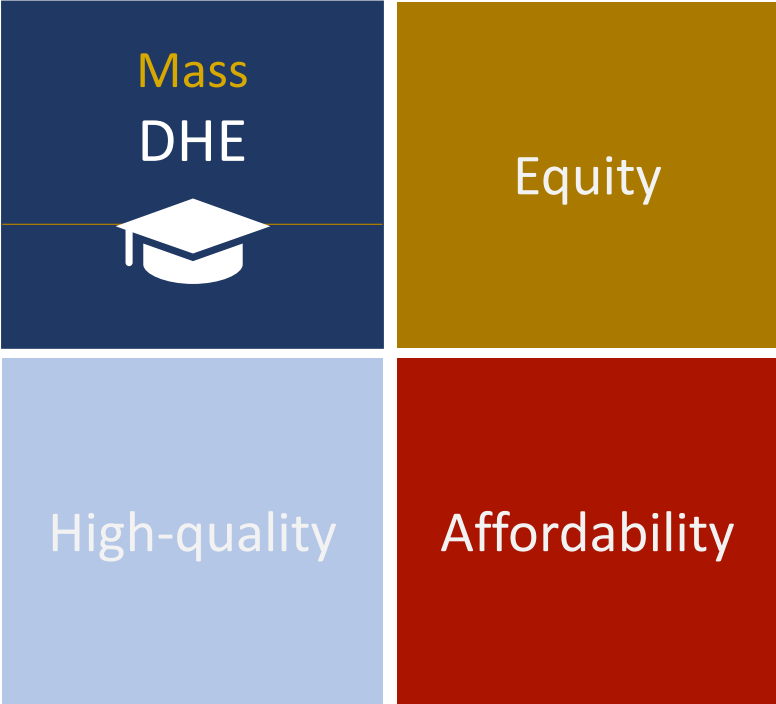
Elena Quiroz-Livanis
Assistant Commissioner



Clantha McCurdy
Senior Deputy
Commissioner,
Access & Financial Aid



José Luis Santos
Senior Deputy Commissioner
and Special Advisor

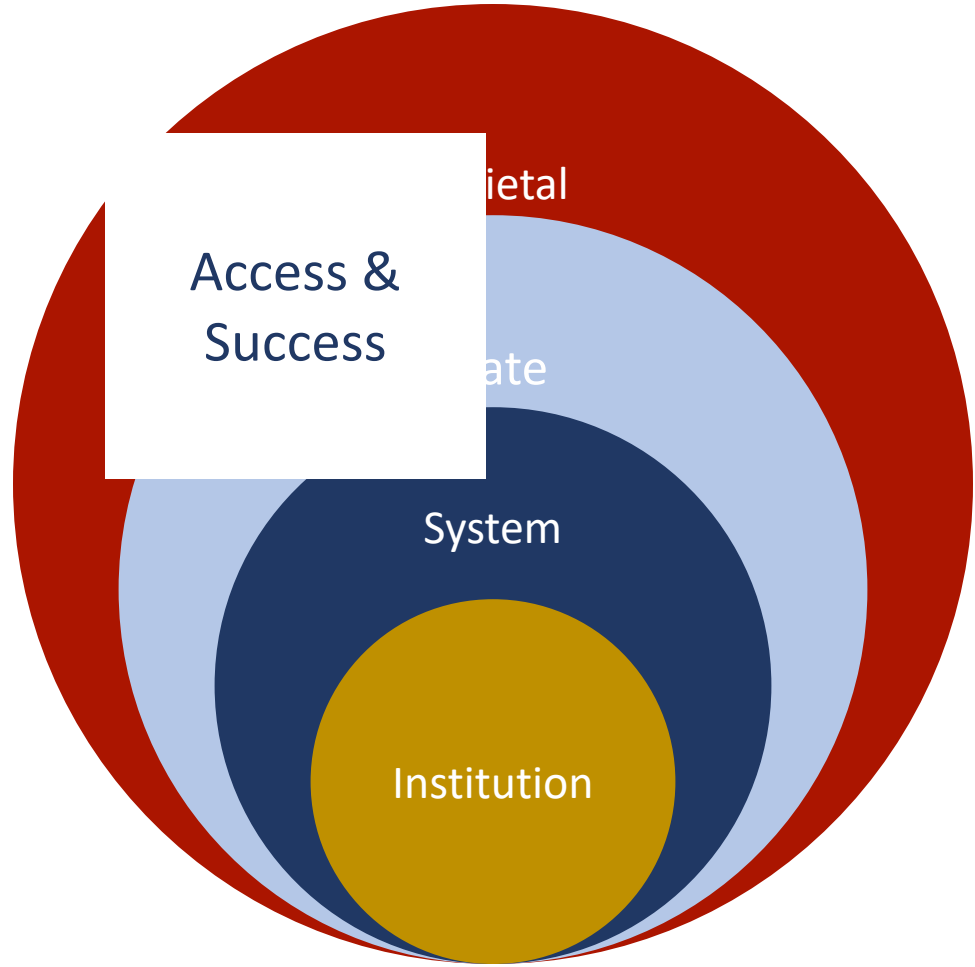


Access &
Success

Equity

High-quality

Affordability





Societal

Changing **Demographics**.

Changing **Perceptions** about College.

SCOTUS: Race Conscious **Admissions Policies**.

FAFSA **Delays**.



Societal

FAFSA Delays.

172,485 Unique FAFSA Records, Compared to 209,459
One Year Ago.

This Represents an 18% Decline in FAFSA Submissions.



Societal

FAFSA Delays (State Led Efforts).

State Financial Aid **Deadline Extension**.

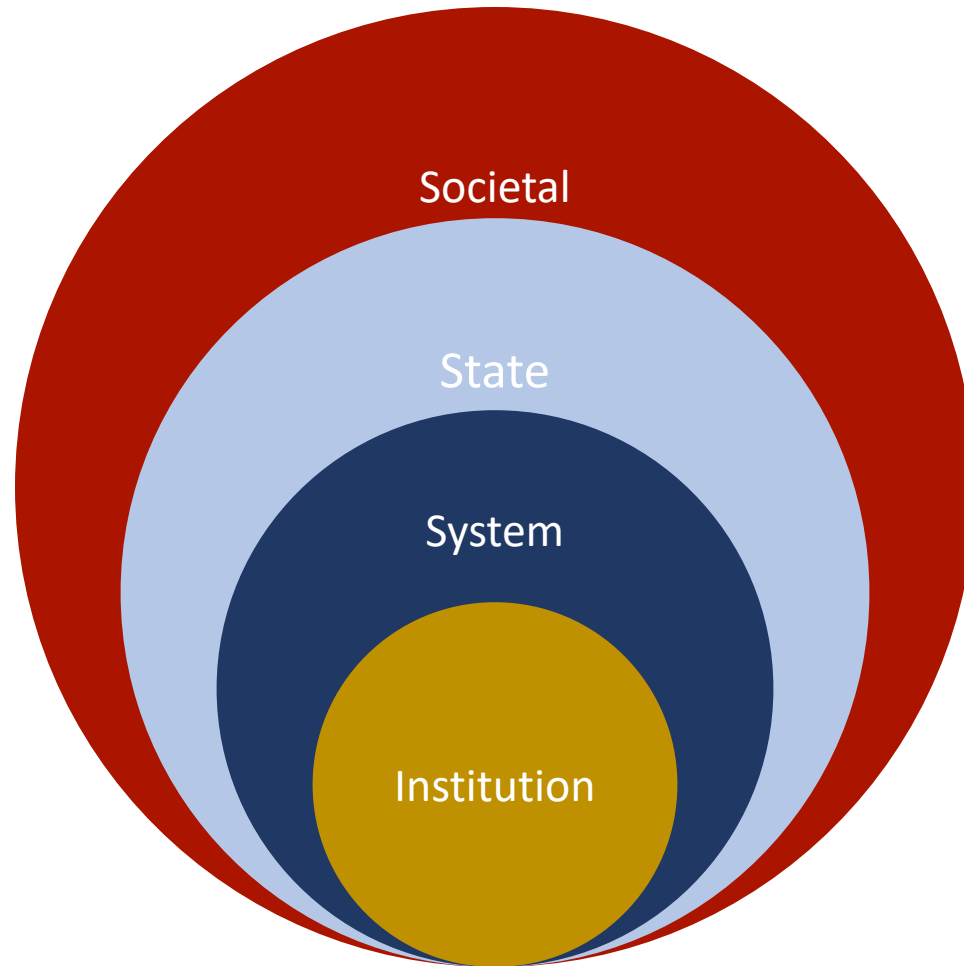
Launched a **FAFSA Completion Initiative** in Gateway Communities.

Planning a **Targeted Communications Campaign**.

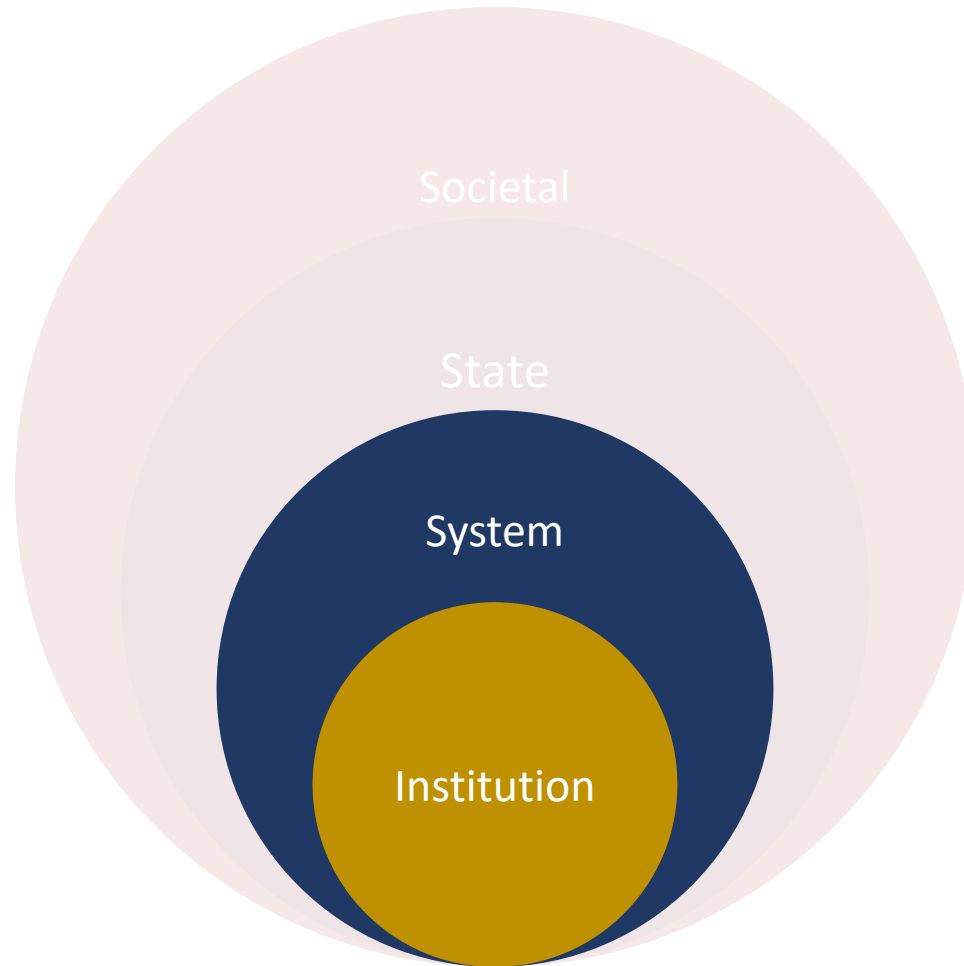
Conducting Additional “**Hands On**” **Virtual Workshops** with MASFAA and MEFA.

Working with Institutions to Provide **Early Award Notifications to Students** on State Financial Aid Programs.

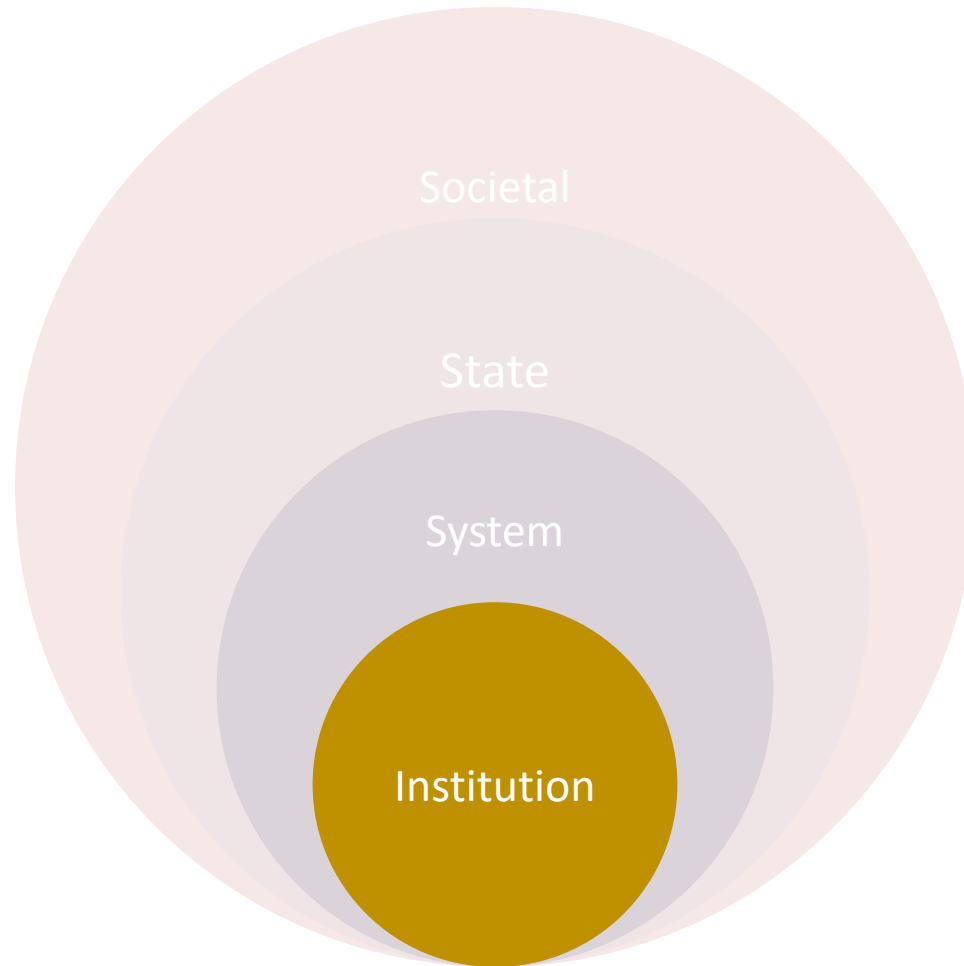
Access &
Success
Strategies



Access & Success Strategies



Access & Success Strategies



Institution

Sample Program Design Elements.

Financial
Resources

Early Momentum
Structures

Curriculum &
Experiential
Learning

Sustained
Support Services

Institution

Sample Program Design Elements.

Financial Resources

Early
Momentum
Structures

Curriculum &
Experiential
Learning

Sustained
Support
Services

Enable students to attend full time:

- Financial aid
- Textbook assistance
- Basic needs

Institution

Sample Program Design Elements.

Financial
Resources

Early Momentum Structures

Curriculum &
Experiential
Learning

Sustained
Support
Services

Provide learners opportunities to accumulate credits:

- Early college
- Credit for prior learning
- Developmental education reform

Institution

Sample Program Design Elements.

Financial
Resources

Early
Momentum
Structures

Curriculum & Experiential
Learning

Sustained
Support
Services

Design high-quality learning experiences:

- Community and industry partnerships
- Guided pathways
- High impact practices

Institution

Sample Program Design Elements.

Financial
Resources

Early
Momentum
Structures

Curriculum &
Experiential
Learning

Sustained Support Services

Offer holistic wraparound supports throughout the student's journey

- Advising
- Behavioral and mental health
- Case management

CUNY ASAP | ACE Program Design Elements.

Financial Resources

- ✓ Grant Aid to Assure FT Enrollment
- ✓ Textbook assistance
- ✓ NYC Transit MetroCards

Early Momentum Structures

- ✓ Block scheduling
- ✓ Continuous enrollment in dev. ed.
- ✓ Intersession offerings

Curriculum & Experiential Learning

- ✓ Engagement opportunities to build a connected community
- ✓ Career development

Sustained Support Services

- ✓ Enhanced advising
- ✓ Tutoring

Institution

Sample Program Design Elements.

Financial
Resources

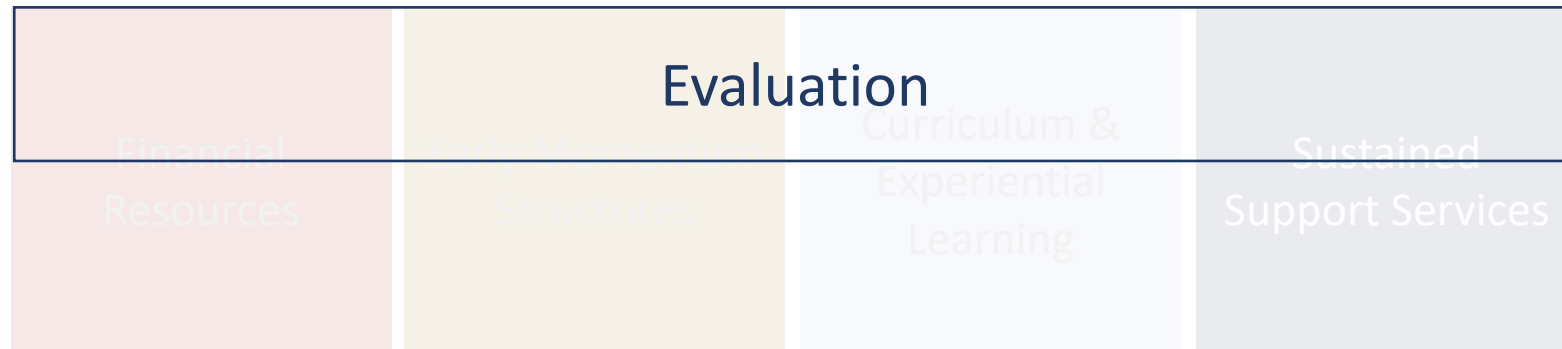
Early Momentum
Structures

Curriculum &
Experiential
Learning

Sustained
Support Services

Institution

Sample Program Design Elements.



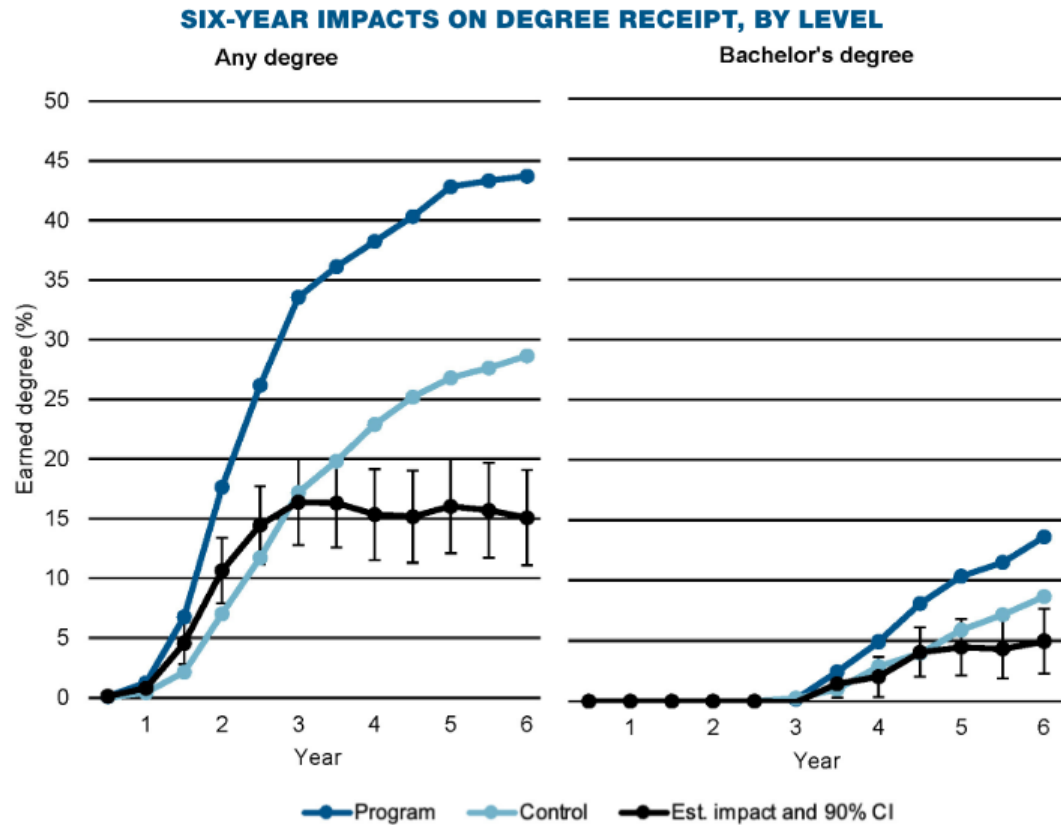
System

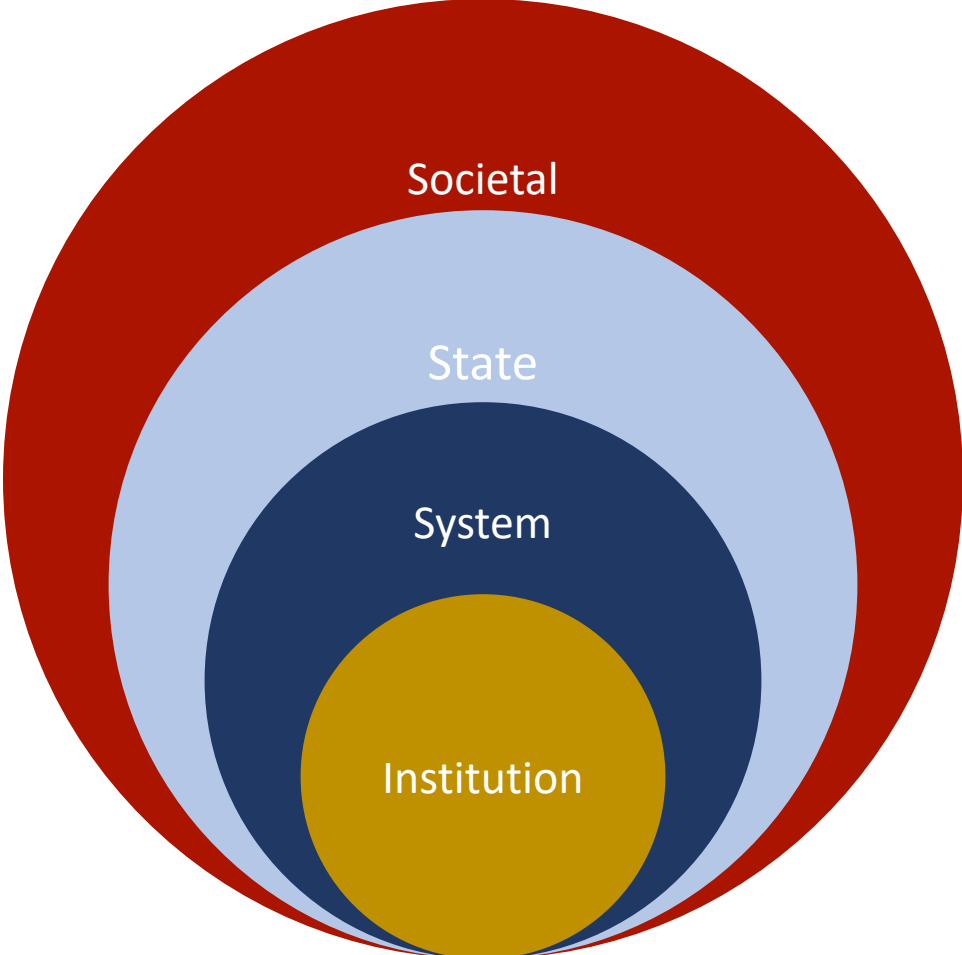
CUNY ASAP | ACE Design Elements.



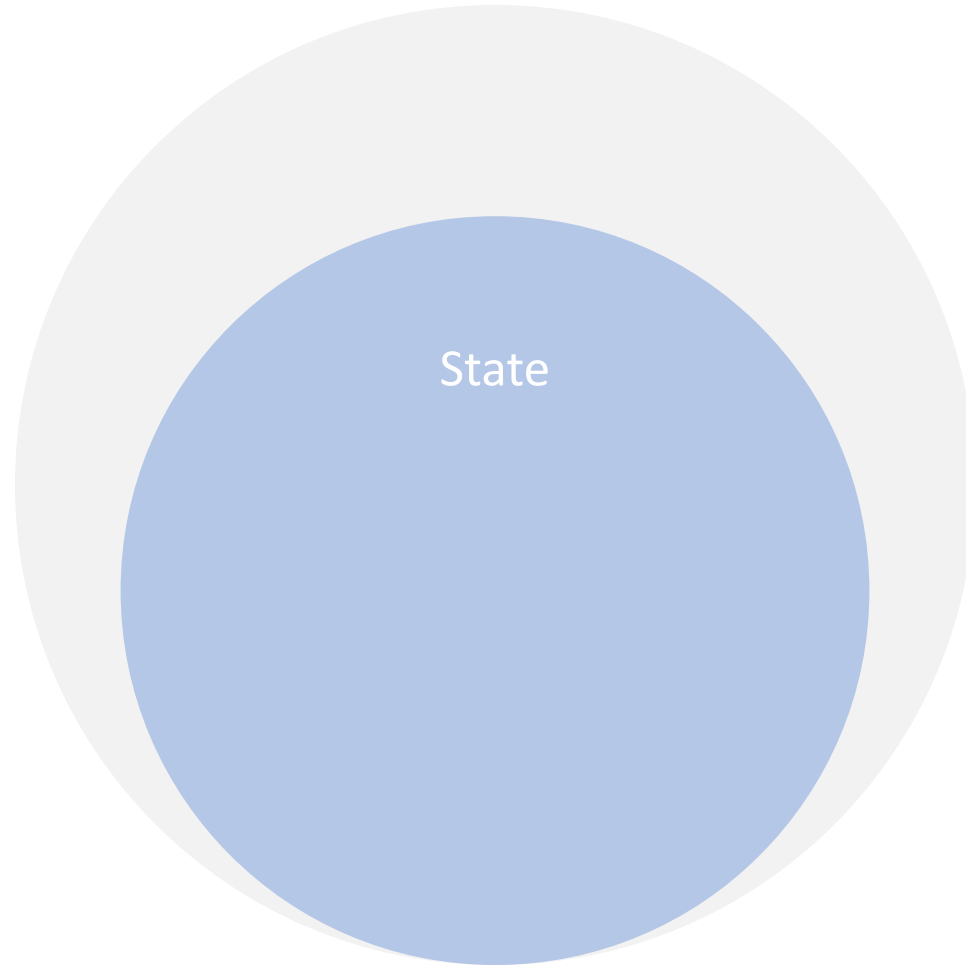
System

Outcomes from Ohio's ASAP Replication.





Access &
Success
Strategies



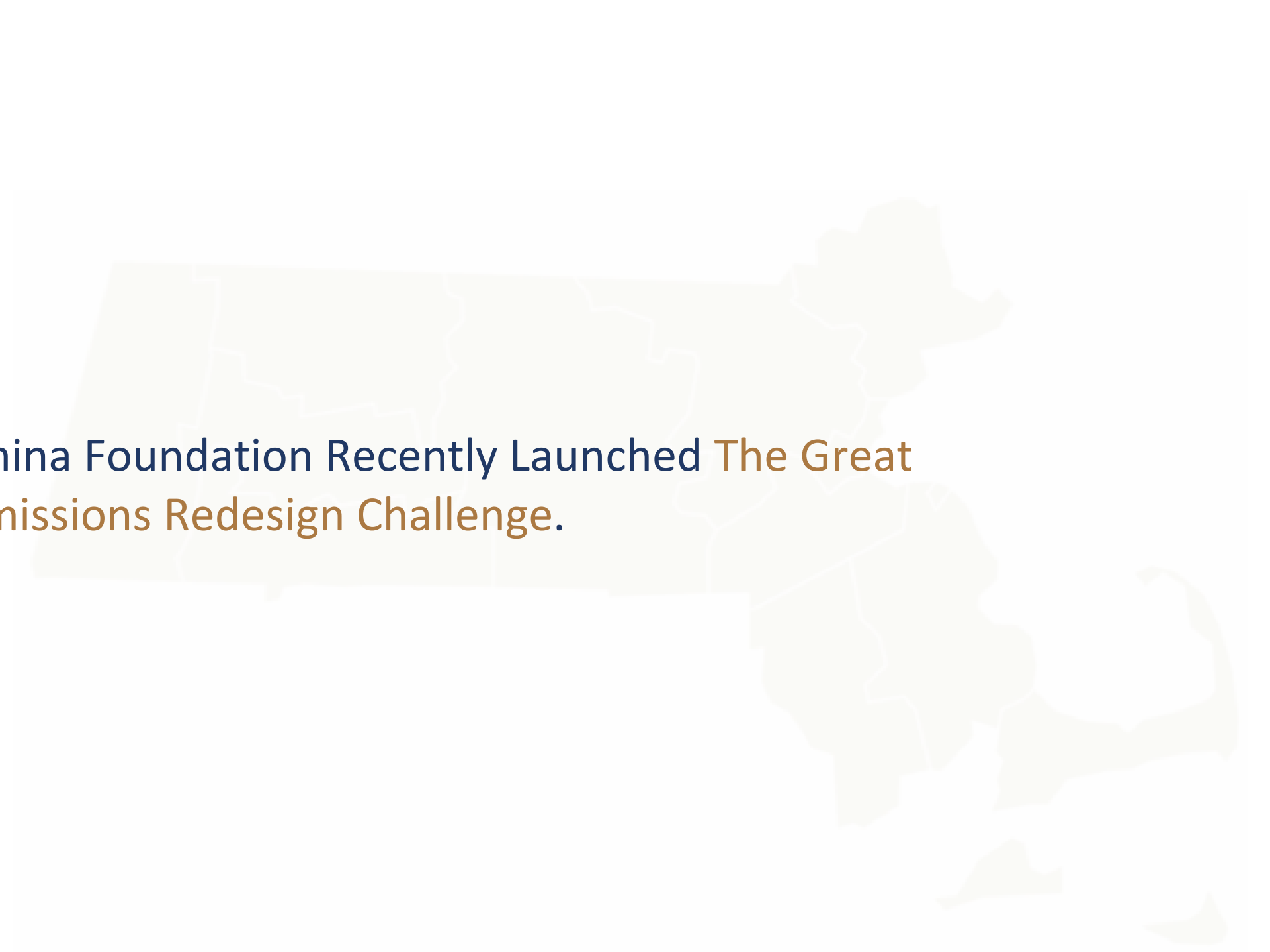
State

Most State Level Strategies Have Primarily Focused on **Equitable Access** for Students.



State

Lumina Foundation Recently Launched **The Great Admissions Redesign Challenge.**

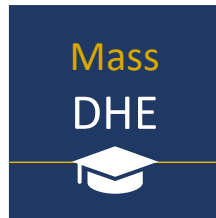


State

Invested \$3 Million in 9 States to Transform how Students get into College.

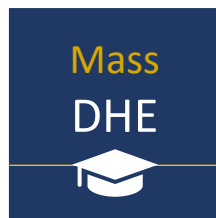


State



The Department Seeks to Create the Conditions for
Greater (and Equitable) Student Access and Success.

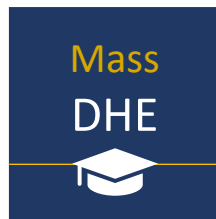
State



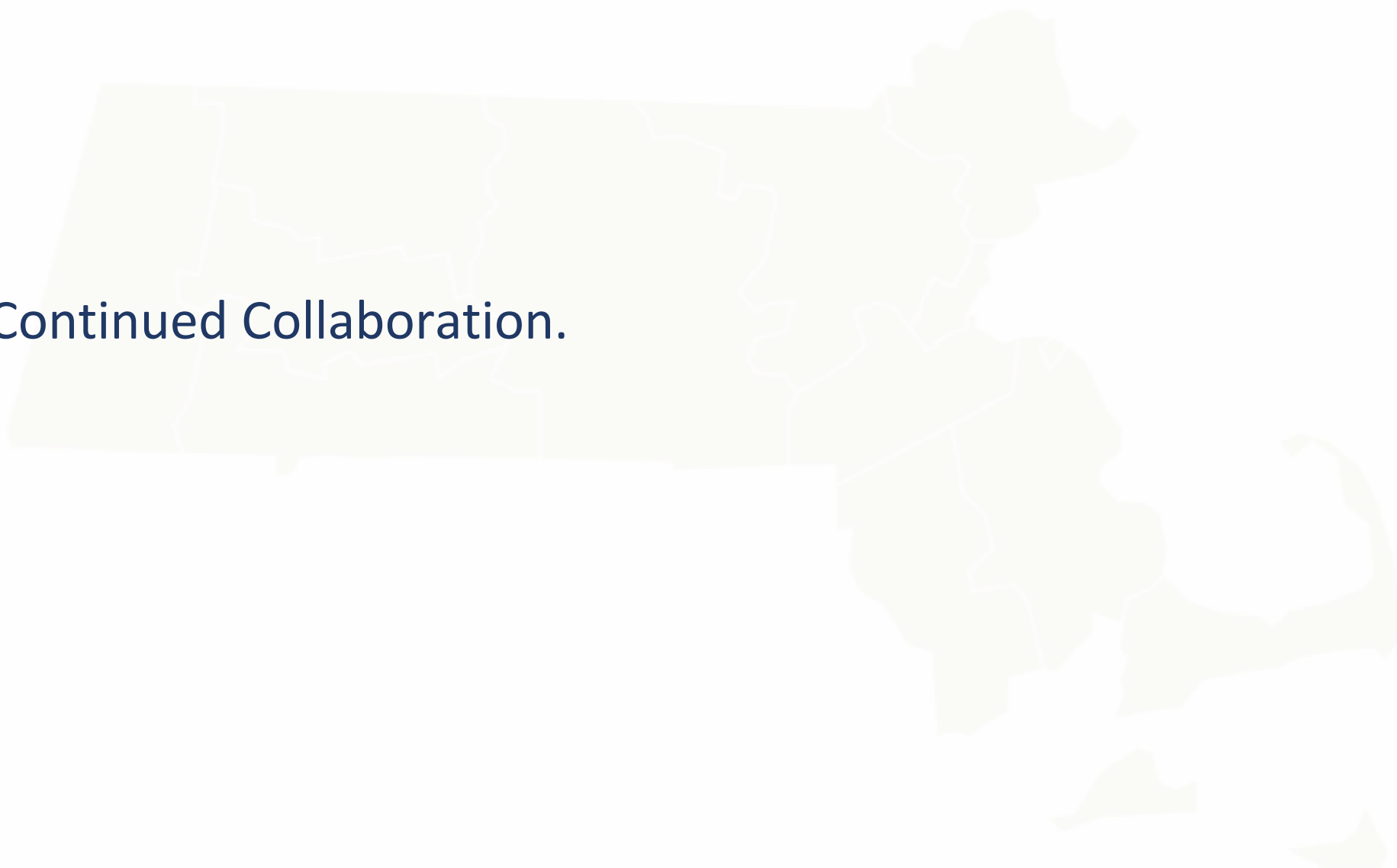
How Will the Department Advance Its Goal?



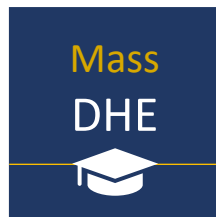
State



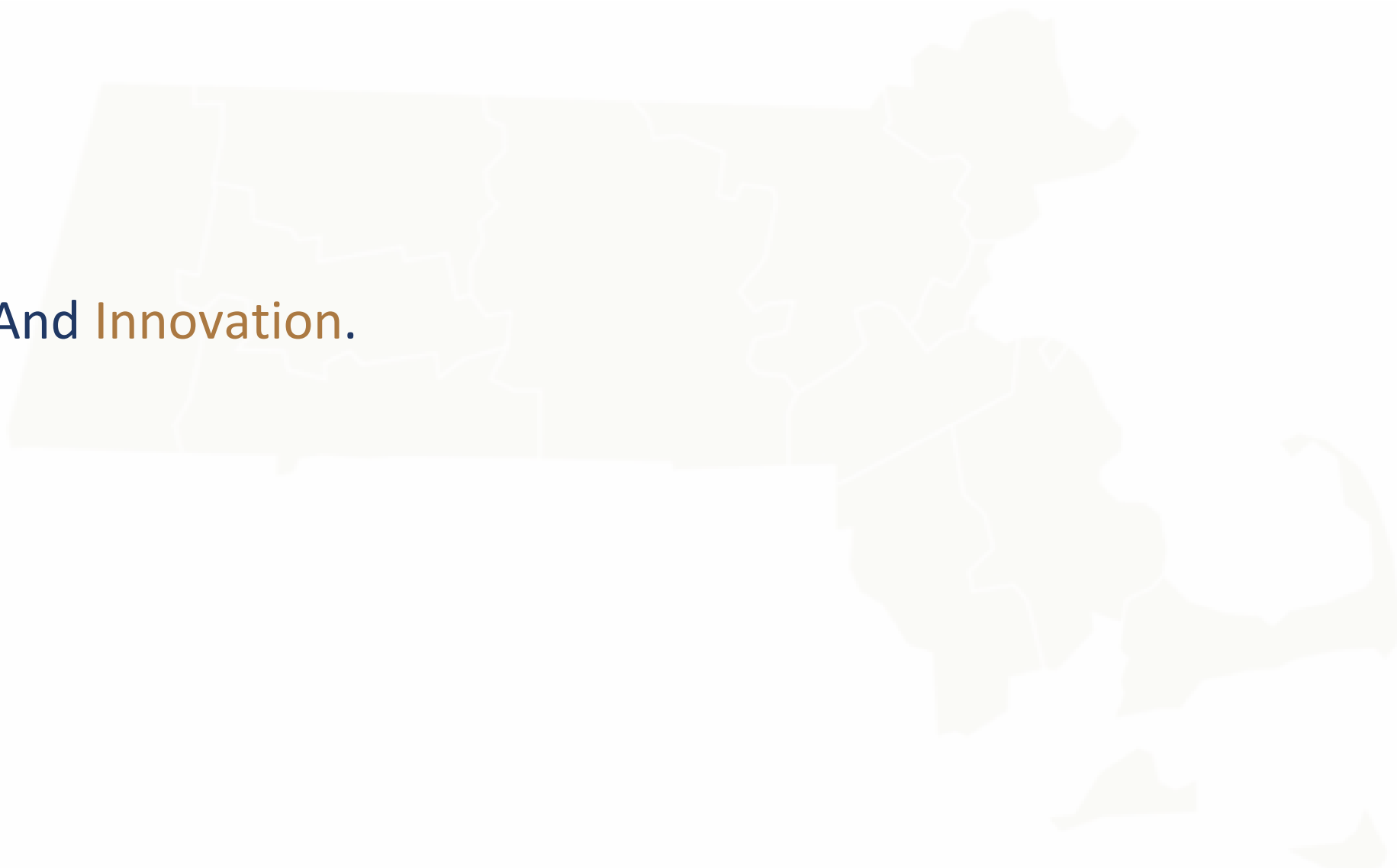
Continued Collaboration.



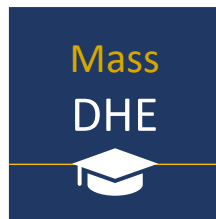
State



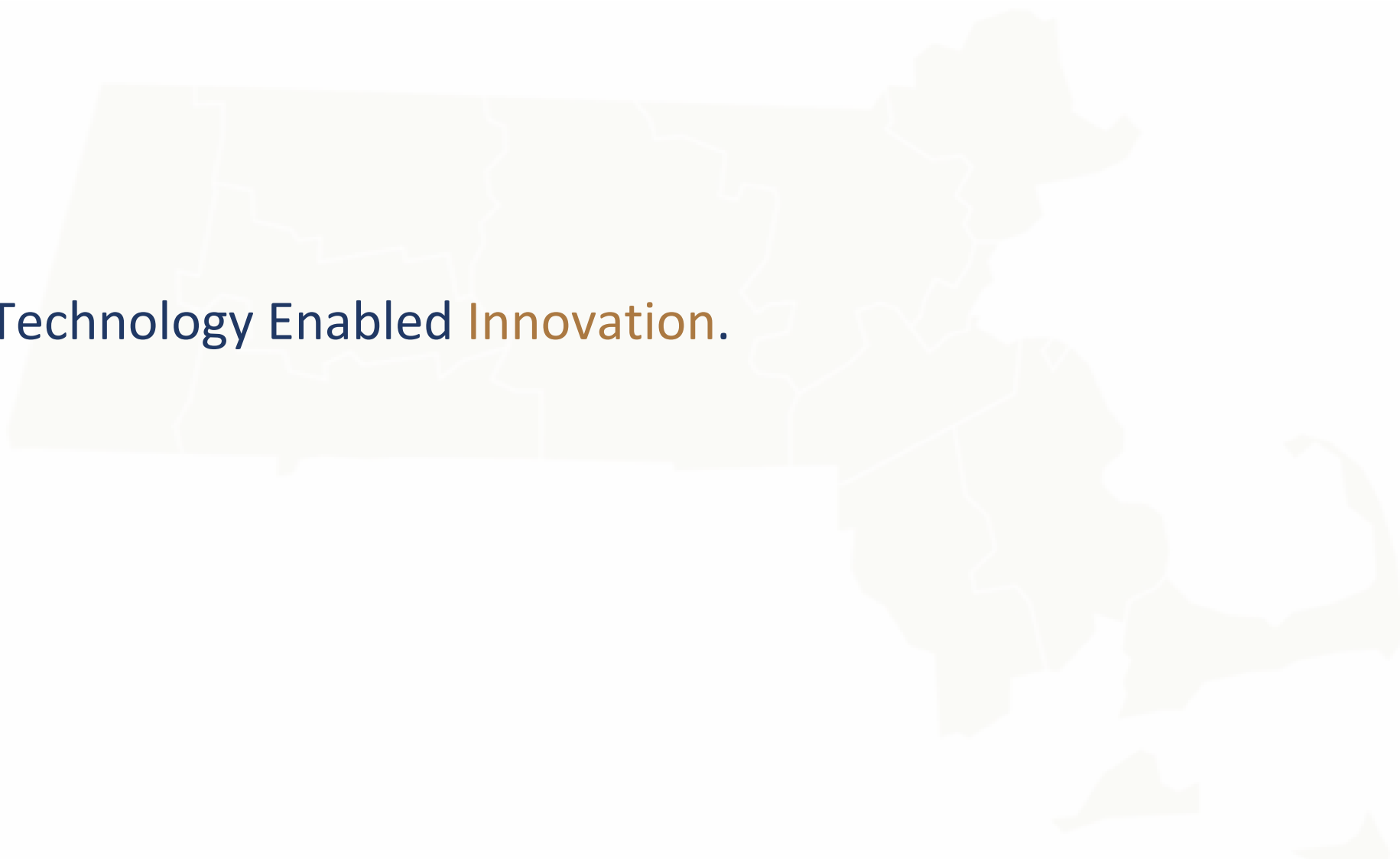
And Innovation.



State



Technology Enabled **Innovation.**

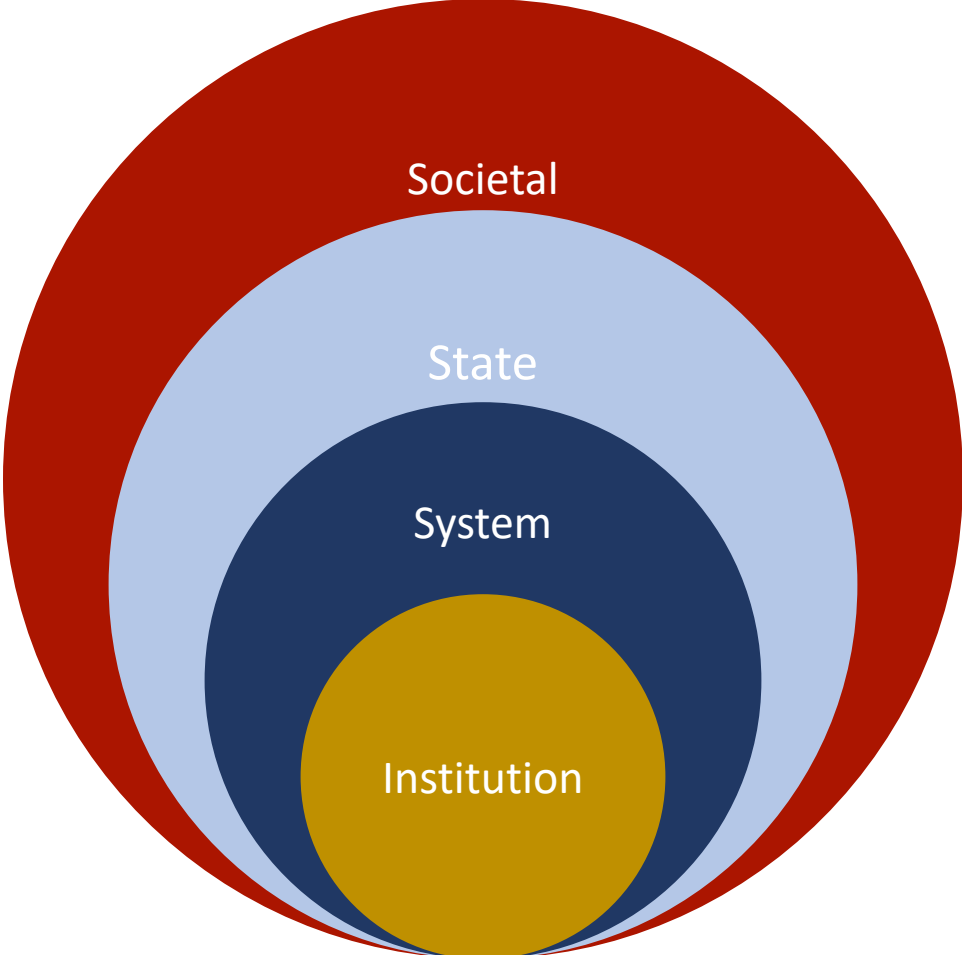


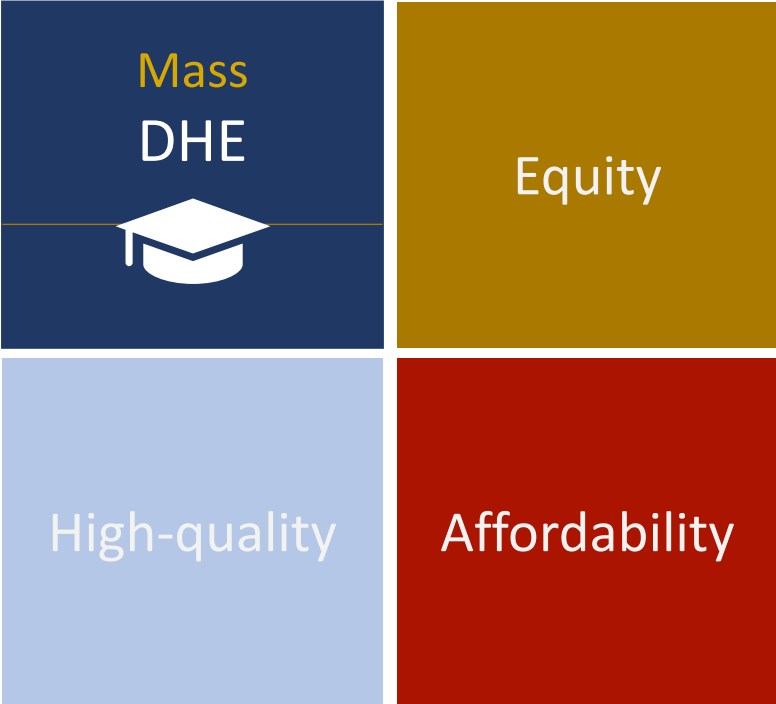
State

Technology Enabled **Innovation.**

ASU + GSV Summit
April 14-17, 2024

HERE COMES THE SUN



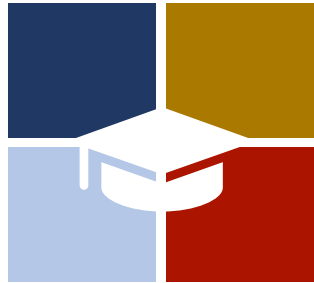


Access &
Success

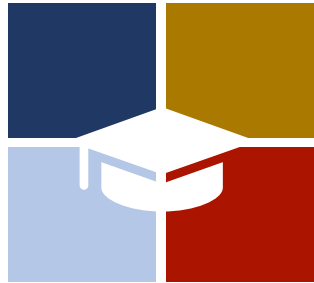
Equity

High-quality

Affordability



Questions or Comments?



Thank You.
